



**India Meteorological Department  
(Ministry of Earth Sciences)  
NATIONAL BULLETIN NO. 4 (BoB/02/2025)**

**TIME OF ISSUE: 0915 HOURS IST**

**DATED: 15.07.2025**

**FROM: INDIA METEOROLOGICAL DEPARTMENT**

**(FAX NO. 24643965/24699216/24623220)**

**TO: CONTROL ROOM, NDM, MINISTRY OF HOME AFFAIRS (FAX.NO. 23093750)  
CONTROL ROOM NDMA (FAX.NO. 26701729)  
CABINET SECRETARIAT (FAX.NO.23012284, 23018638)  
PS TO HON'BLE MINISTER FOR S & T AND EARTH SCIENCES (FAX NO.23316745)  
SECRETARY, MOES (FAX NO. 24629777)  
H.Q. (INTEGRATED DEFENCE STAFF AND CDS) (FAX NO. 23005137/23005147)  
DIRECTOR GENERAL, DOORDARSHAN (23385843)  
DIRECTOR GENERAL, AIR (23421105, 23421219)  
PIB MOES (FAX NO. 23389042)  
UNI (FAX NO. 23355841)  
D.G. NATIONAL DISASTER RESPONSE FORCE (NDRF) (FAX NO. 26105912, 2436 3260)  
DIRECTOR, PUNCTUALITY, INDIAN RAILWAYS (FAX NO. 23388503)  
CHIEF SECRETARY, ODISHA (FAX NO. 0674-2536660)  
CHIEF SECRETARY, WEST BENGAL (FAX NO. 033-22144328)  
CHIEF SECRETARY, GOVT. OF SIKKIM (FAX NO.0359-2222851)  
CHIEF SECRETARY, GOVT. OF BIHAR (FAX NO. 0612-2217085)  
CHIEF SECRETARY, GOVT. OF JHARKHAND (FAX NO. 0651-2400255)  
CHIEF SECRETARY, GOVT. OF CHHATTISGARH (FAX NO. 0771-2221206)  
CHIEF SECRETARY, GOVT. OF MADHYA PRADESH (FAX NO. 0755-2551521)  
CHIEF SECRETARY, GOVT. OF RAJASTHAN (FAX NO. 0141-2227114)  
CHIEF SECRETARY, GOVT. OF ASSAM (FAX NO. 0361-2260900)  
CHIEF SECRETARY, GOVT. OF MEGHALAYA (FAX NO. 0364-2225978)**

**Subject: (A) Depression over Jharkhand and neighbourhood  
(B) Well Marked Low pressure area over central parts of north Rajasthan**

**(A) Depression over Jharkhand and neighbourhood**

The depression over central parts of Gangetic West Bengal moved west-northwestwards with speed of 23 kmph during past 6 hours and lay centred at 0530 hrs IST of today, the 15th July 2025 over Jharkhand and neighbourhood near Lat. 24.0°N and Long. 86.7°E, about 40 km northeast of Dhanbad, 140 km east of Hazaribagh, and 200 km east-southeast of Gaya

It is likely to move further west-northwestwards across Jharkhand and adjoining south Bihar towards east Uttar Pradesh; maintaining its intensity of depression during next 24 hours.

**(B) Well Marked Low pressure area over central parts of north Rajasthan**

The well marked Low Pressure area over central parts of Rajasthan persisted over the same region at 0530 hrs IST of today, the 15th July, 2025.

It is likely to continue to move slowly west-northwestwards across north Rajasthan during next 24 hours .

## **Warnings:**

### **(i) Rainfall Warning:**

**Odisha:** Light to moderate rainfall at most places with heavy to very heavy rainfall at isolated places during 15<sup>th</sup> to 16<sup>th</sup> July and heavy rainfall at isolated places on 17<sup>th</sup> July.

**West Bengal & Sikkim:** Light to moderate rainfall at most places with heavy to very heavy rainfall at isolated places over Gangetic West Bengal and Sub-Himalayan West Bengal & Sikkim on 15<sup>th</sup> July and heavy rainfall at isolated places over Sub-Himalayan West Bengal & Sikkim on 16<sup>th</sup> July.

**Jharkhand:** Light to moderate rainfall at most places with heavy to very heavy rainfall at a few places during 15<sup>th</sup> – 16<sup>th</sup> July with extremely heavy rainfall at isolated places on 15<sup>th</sup> July.

**Bihar:** Light to moderate rainfall at most places with heavy to very heavy rainfall at isolated places on 15<sup>th</sup> & 16<sup>th</sup> July and heavy rainfall at isolated places on 17<sup>th</sup> July.

**Chhattisgarh:** Light to moderate rainfall at most places with heavy to very heavy rainfall at isolated places on 15<sup>th</sup> & 16<sup>th</sup> July and heavy rainfall at isolated places on 17<sup>th</sup> July.

**East Uttar Pradesh:** Light to moderate rainfall at most places with heavy to very heavy rainfall at isolated places on 15<sup>th</sup> July and heavy rainfall at isolated places during 16<sup>th</sup> – 18<sup>th</sup> July with heavy to very heavy rainfall at isolated places on 17<sup>th</sup> July.

**West Uttar Pradesh:** Light to moderate rainfall at most places with heavy rainfall at isolated places during 16<sup>th</sup> – 18<sup>th</sup> July.

**East Madhya Pradesh:** Light to moderate rainfall at most places with heavy rainfall at isolated places on 15<sup>th</sup> July and heavy to very heavy rainfall at isolated places during 16<sup>th</sup> -17<sup>th</sup> July.

**West Madhya Pradesh:** Light to moderate rainfall at most places with heavy to very heavy rainfall at isolated places till morning of 15<sup>th</sup> July and heavy rainfall at isolated places during 15<sup>th</sup> -18<sup>th</sup> July.

**East Rajasthan:** Light to moderate rainfall at most places with heavy to very heavy rainfall at a few places with extremely heavy rainfall (**≥ 21 cm**) at isolated places on 15<sup>th</sup> July; heavy rainfall at isolated places on 16<sup>th</sup> & 17<sup>th</sup> July.

**West Rajasthan:** Light to moderate rainfall at most places with heavy to very heavy rainfall at a few places with extremely heavy rainfall (**≥ 21 cm**) at isolated places on 15<sup>th</sup> July; heavy to very heavy rainfall at isolated places on 16<sup>th</sup> and heavy rainfall at isolated places on 17<sup>th</sup> July.

**Gujarat:** Light to moderate rainfall at most places with heavy rainfall at isolated places on 15<sup>th</sup> July. Heavy rainfall at isolated places over Saurashtra & Kutch on 15<sup>th</sup> July.

**Assam:** Light to moderate rainfall at most places with heavy to very heavy rainfall at isolated places on 15<sup>th</sup> July and heavy rainfall at isolated places on 17<sup>th</sup> July.

**Meghalaya:** Light to moderate rainfall at most places with heavy to very heavy rainfall at isolated places on 15<sup>th</sup> July and heavy rainfall at isolated places on 17<sup>th</sup> July.

### **(ii) Wind Warning:**

- ❖ Squally wind speed reaching 40-50 kmph gusting to 60 kmph is prevailing over north Bay of Bengal, along & off Odisha, West Bengal and Bangladesh coasts for next 12 hours. Squally wind speed reaching 30-40 kmph gusting to 50 kmph is likely over Bihar, Jharkhand, North Odisha, north Chhattisgarh and adjoining Gangetic West Bengal during next 24 hours.

- ❖ Squally wind speed reaching 30-40 kmph gusting to 50 kmph is likely over northeast Rajasthan and adjoining northwest Madhya Pradesh for next 24 hours, and over south Rajasthan & neighbourhood for subsequent 24 hours.

**(iii) Sea Condition:**

**Sea condition is very likely to be rough to very rough over** north Bay of Bengal and along & off Odisha, West Bengal and Bangladesh coasts during next 12 hours.

**(iv) Fishermen Warning:**

Fishermen are advised not to venture into north Bay of Bengal, along & off Odisha, West Bengal and Bangladesh coasts till evening of 15<sup>th</sup> July.

**(v) Impact Expected and Action Suggested due to heavy rainfall and squally winds**

**Impact expected:**

- ❖ Breaking of tree branches, uprooting of small trees like banana, papaya, drum sticks. Strong wind and rain may damage plantation, horticulture and standing crops.
- ❖ Partial damage to vulnerable structures due to strong winds and rain.
- ❖ Minor damage to kutcha houses/walls, huts and roads due to heavy rain.
- ❖ Loose objects may fly.
- ❖ Onshore and offshore operations may get affected.
- ❖ Small ships, trawlers and boats may be affected.
- ❖ Road and rail traffic may be affected due to heavy rain and squally winds.
- ❖ There could be localised landslides, mudslides, landslips, water logging, inundation and flooding over low lying areas.
- ❖ Occasional reduction in visibility due to heavy rainfall.
- ❖ Helicopter services may get affected.

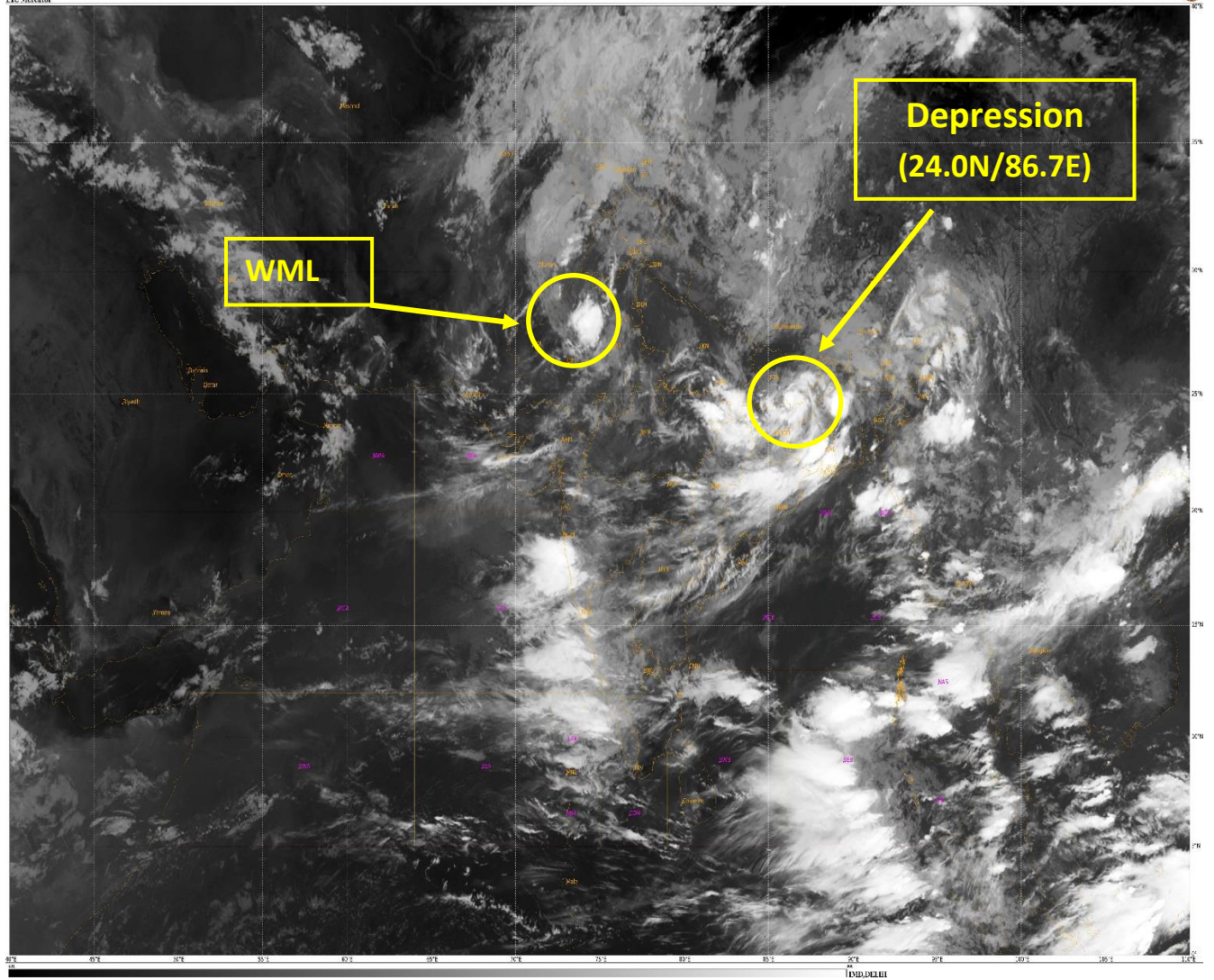
**Action suggested:**

- ❖ People are advised to keep a watch on the weather for worsening conditions and be ready to move to safer places accordingly.
- ❖ Take safe shelters; do not take shelter under trees, as there could be lightning.
- ❖ In case of expected lightning, unplug electrical/ electronic appliances, immediately, get out of water bodies and keep away from all the objects that conduct electricity.
- ❖ Tourism and recreational activities to be regulated.
- ❖ Onshore and offshore activities to be judiciously regulated.
- ❖ Helicopter services to be regulated.

**Next bulletin will be issued at 0830 hours IST of today, the 15<sup>th</sup> July, 2025.**

**(Umasankar Das)**  
**Scientist D, New Delhi**

*Copy to: ACWC Kolkata/ACWC Chennai/CWC Bhubaneswar/CWC Vishakhapatnam/Meteorological Centres- Port Blair/ Itanagar/ Kohima/ Agartala/ Gangtok/ Imphal/ Aizwal/ Shillong/ Gangtok/ Regional Meteorological Centre Guwahati*



WML – Well Marked Low Pressure Area





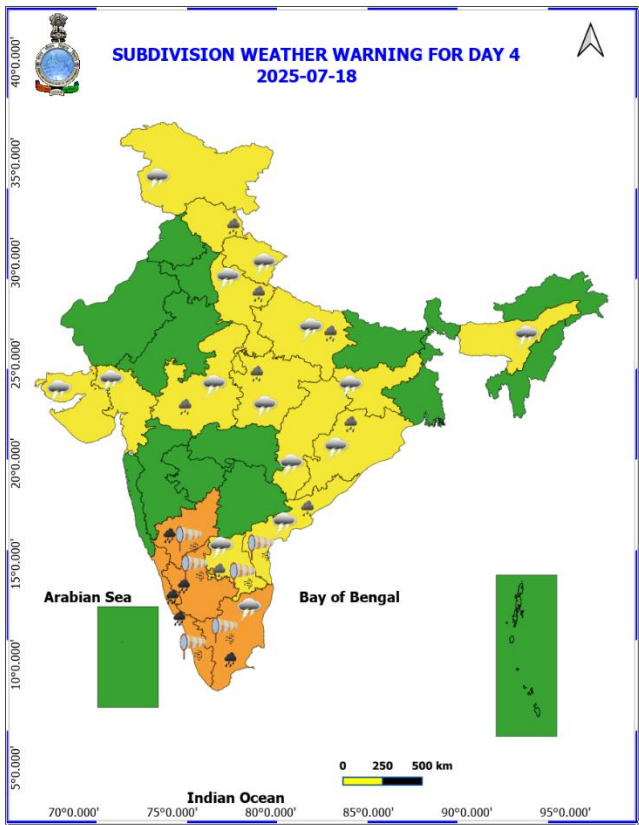
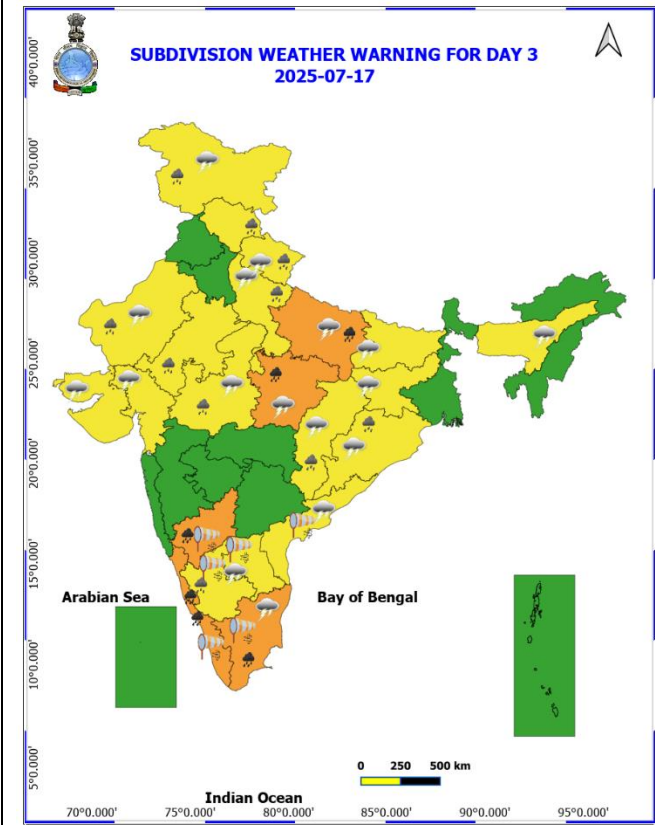
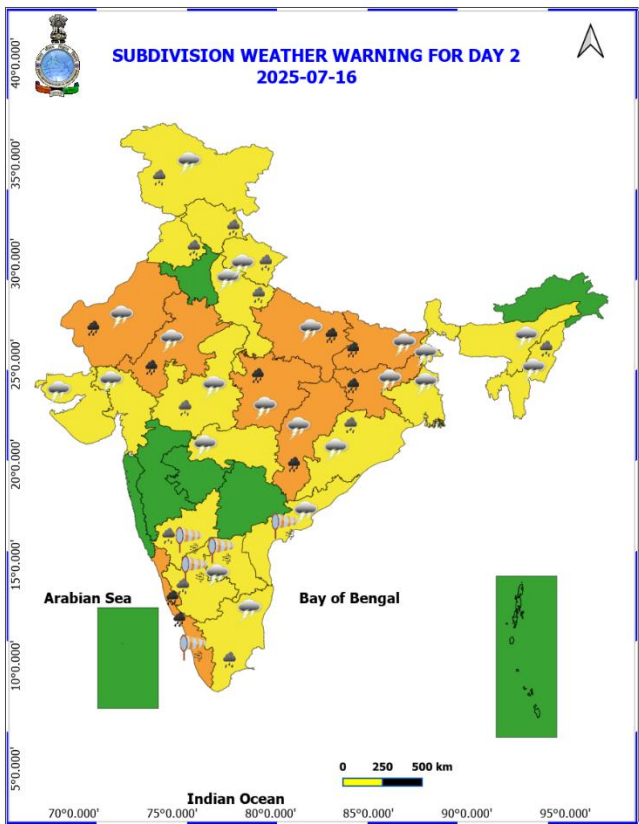
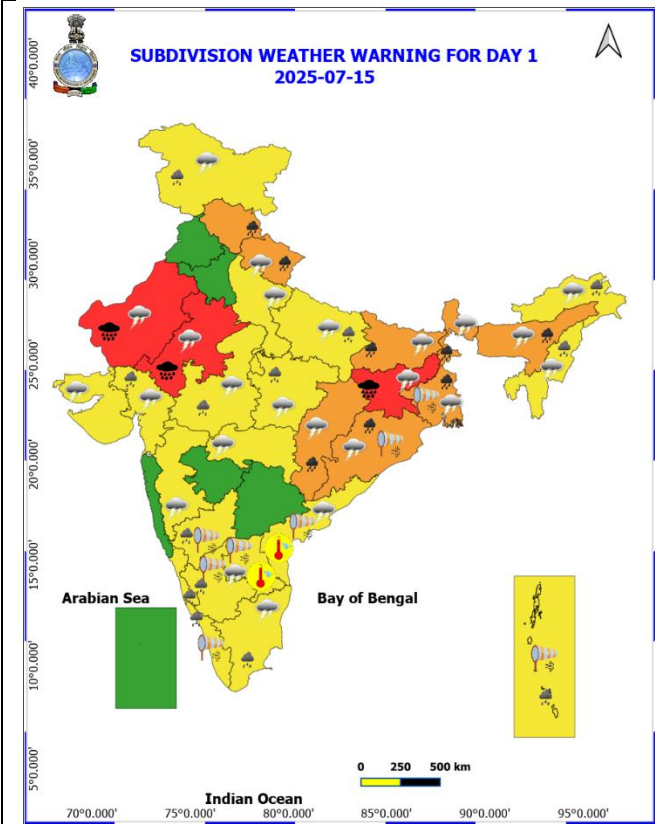
# **OBSERVED AND FORECAST TRACK OF DEPRESSION OVER JHARKHAND AND NEIGHBOURHOOD ON 0000 UTC (0530 Hrs. IST) OF 15<sup>th</sup> JULY 2025**

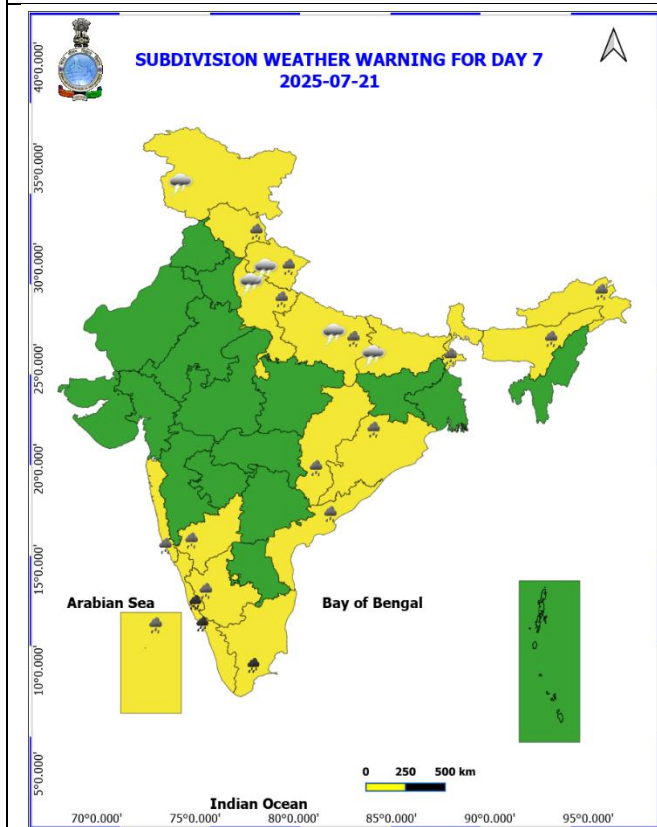
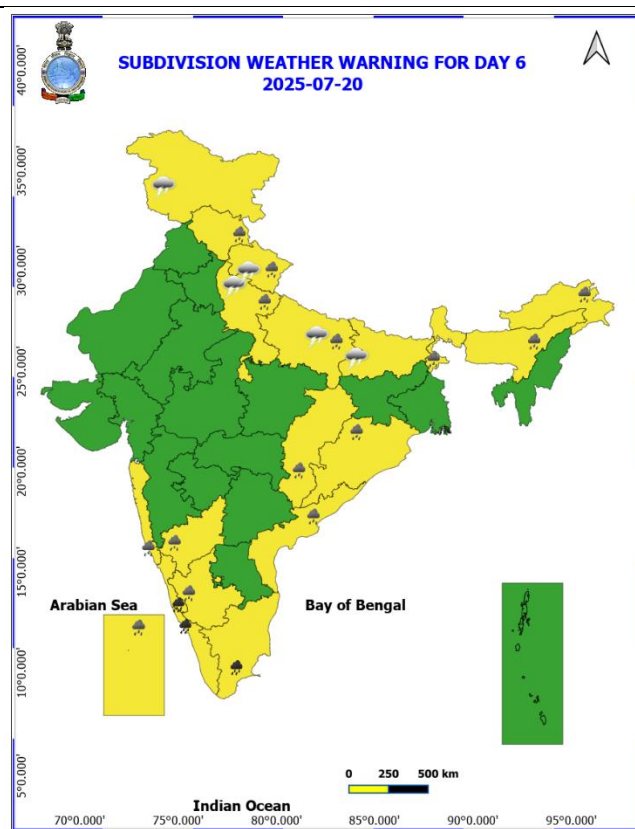
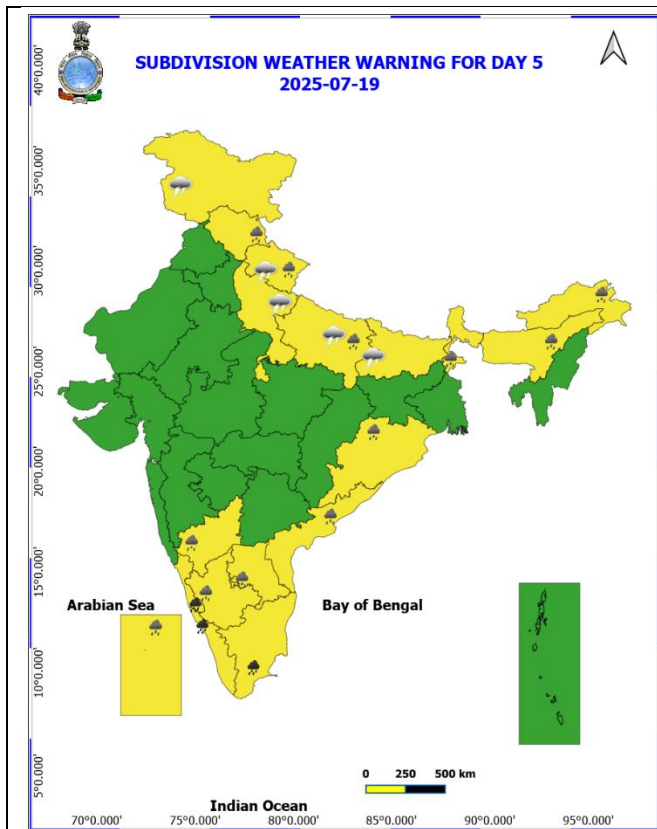


DATE/TIME	: IN UTC
IST	: UTC + 0530
KT	: NAUTICAL MILE/HOUR = 1.85 KM/HOUR
LPA	: LOW PRESSURE AREA
WML	: WELL MARKED LOW PRESSURE AREA
D	: DEPRESSION (17-27 KT)
DD	: DEEP DEPRESSION (28-33 KT)
CS	: CYCLONIC STORM (34-47 KT)
SCS	: SEVERE CYCLONIC STORM (48-63 KT)
VSCS	: VERY SEVERE CYCLONIC STORM (64-89 KT)
ESCS	: EXTREMELY SEVERE CYCLONIC STORM (90-119 KT)
SuCS	: SUPER CYCLONIC STORM ( $\geq 120$ KT)

	LESS THAN 34 KT
	34-47 KT
	$\geq 48$ KT
	OBSERVED TRACK
	FORECAST TRACK
	CONE OF UNCERTAINTY

Weather Warning Graphics





**COLOUR CODED WARNING**

No Warning (No Action)
Watch (Be Aware)
Alert (Be Prepared To Take Action)
Warning (Take Action)

**Probabilistic Forecast**

Terms	Probability of Occurrence (%)
Unlikely	< 25
Likely	25 - 50
Very Likely	50 - 75
Most Likely	> 75

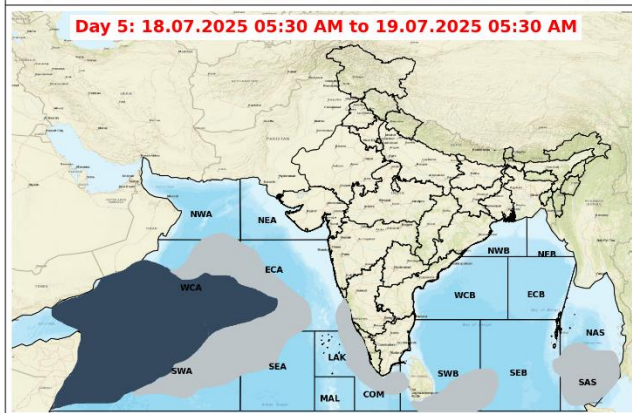
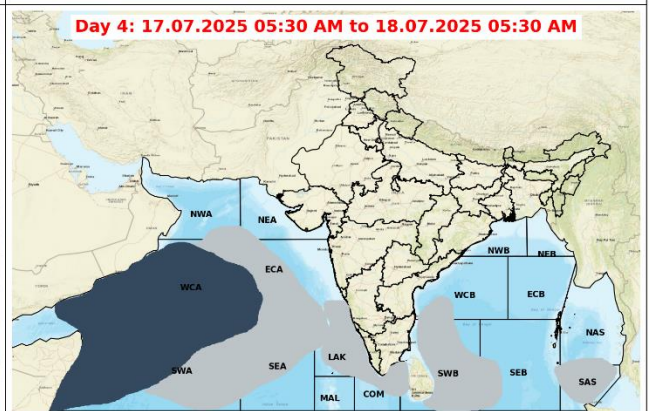
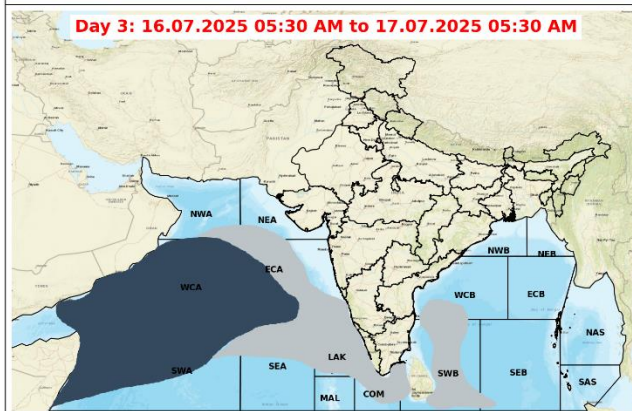
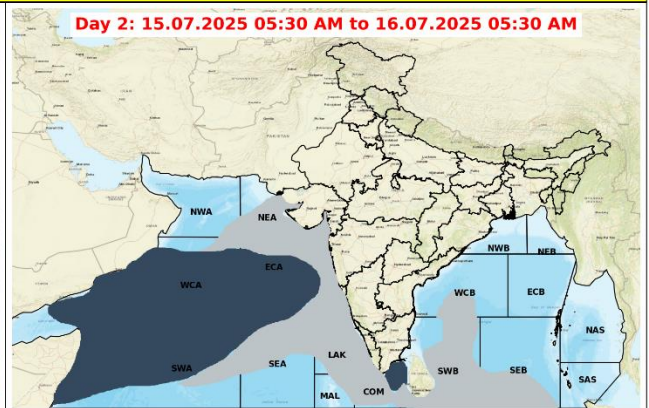
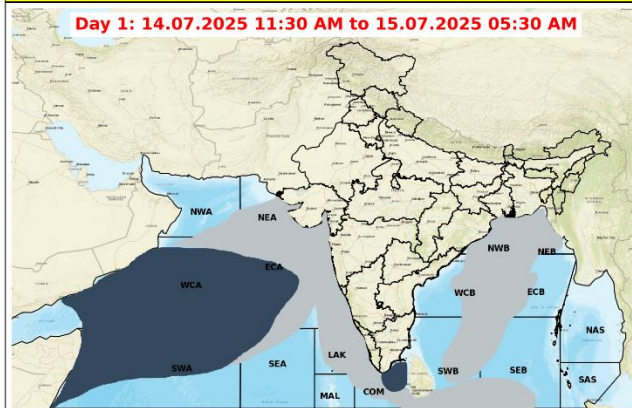
**Weather Warnings:**

- Fog
- Heavy Rain
- Very Heavy Rain
- Extremely Heavy Rain
- Thunder & Lightning
- Hailstorm
- Dust Raising Winds
- Heavy Snow
- Dust Storm
- Heat Wave
- Warm Night
- Hot Day
- Hot & Humid
- Strong Surface Winds
- Cold Wave
- Cold Day
- Ground Frost

\* Red colour warning does not mean "Red Alert", Red colour warning means "Take Action".  
Forecast and Warning for any day is valid from 0630 hours IST of day till 0630 hours IST of next day.  
For more details, kindly visit <https://mausam.india.gov.in> or contact: 011-2434-4599  
(Service to the Nation since 1875)



## Fishermen Warning Graphics



### Legend

	Squally wind with speed 55-65 kmph gusting to 75 kmph		CS with Gale winds with speed 60-80 kmph gusting to 90 kmph
	Squally Weather with wind speed 40-50 kmph gusting to 60 kmph		SCS with Gale wind speed 90-110 kmph gusting to 120 kmph
	Squally Weather with wind speed 45-55 kmph gusting to 65 kmph		VSCS with Gale wind speed 120-165 kmph gusting to 185 kmph
	Squally wind with speed 45-55 kmph gusting to 65 kmph		ESCS with Gale wind speed 165-220 kmph gusting to 245 kmph
	Squally wind with speed 50-60 kmph gusting to 70 kmph		

Fishermen are advised not to venture into the marked areas.



## Flash Flood Guidance

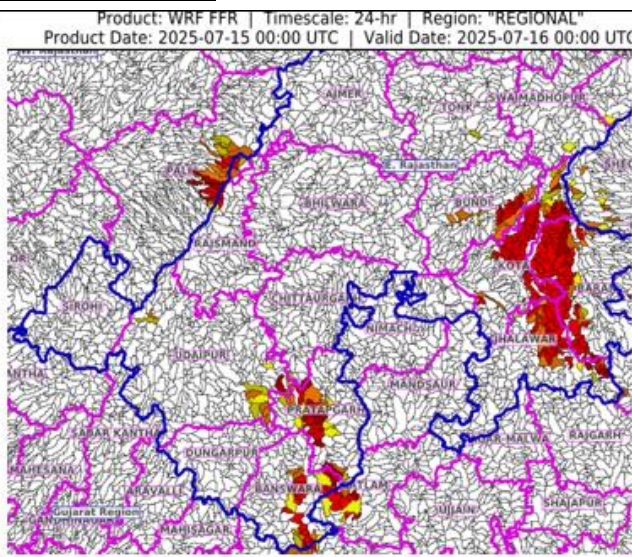
### **24 hours Outlook for the Flash Flood Risk (FFR) till 0530 IST of 16-07-2025 :**

**Low to Moderate flash flood risk** likely over few watersheds & neighbourhoods of following Met Sub-divisions during next 24 hours.

**West Rajasthan** – Pali district.

**East Rajasthan** – Kota, Baran, Jhalawar, Bundi, Sawaimadhupur, Tonk, Rajsmand, Udaipur, Dungarpur, Banswara and Pratapgarh districts.

Surface runoff/ Inundation may occur at some fully saturated soils & low-lying areas over Area of Concern (AoC) as shown in map due to expected rainfall occurrence in next 24 hours.



### **24 hours Outlook for the Flash Flood Risk (FFR) till 0530 IST of 16-07-2025 :**

**Low to Moderate flash flood risk** likely over few watersheds & neighborhoods of following Met Sub-divisions during next 24 hours.

**Gangetic West Bengal** – Bankura, Pashchim Midnipur, and Purulia districts.

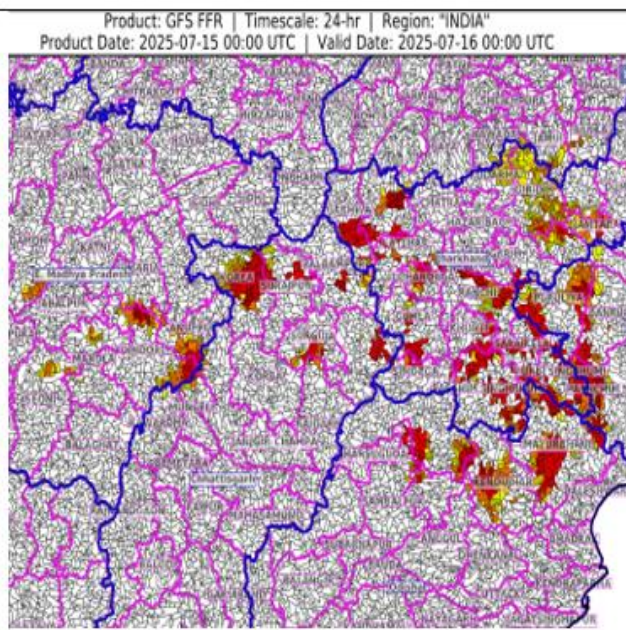
**Odisha** – Kandahar, Mayurbhanj, Anugul, Sundergarh, Sambalpur and Deogarh districts.

**Jharkhand** – Gumla, Simdega, Lohardaga, Latehar, Khunti, Pashchim Singhbhum, Purbi Singhbhum, Saraikela, Ramgarh, Bokara, Dhanbad, Garhwa, Palamu, Kodarma, Giridih, Jamtara, Deogarh, Dumka and Ranchi districts.

**Chhattisgarh** –Surguja, Surajpur, Jashpur, Raigarh, Korea and Balrampur districts.

**East Madhya Pradesh** –Umaria, Annupur, Dindori, Mandla, Seoni, Damoh and Sagar districts.

Surface runoff/ Inundation may occur at some fully saturated soils & low-lying areas over Area of Concern (AoC) as shown in map due to expected rainfall occurrence in next 24 hours.



#### **Flash Flood Risk**

	<b>High Risk (Take Action)</b>
	<b>Moderate Risk (Be Prepared)</b>
	<b>Low Risk (Be Updated)</b>